



# Adult 55+ COMMUNITIES



## Villages at Aberdeen

Clayton  
Gloucester County, NJ

[Return to Community Directory](#)

[Request More Info](#) [View Floor plans](#) [Create Printable Brochure](#)



**Information:**  
856.881.1067

**Sales Hours:**  
Tuesday through Sunday  
10 am - 5 pm

Monday by appointment

**Directions:**  
Route 55 –  
Exit 45 ((Rt.553 –  
Clayton//Glassboro/Centerton.  
Make left onto Buck Road,  
then make first right onto  
W.Clayton Ave.  
Bear left onto W.Academy St.  
Community is approximately 1  
mile on the left.



**Overview:**

The Villages at Aberdeen, by J.S.Hovnanian & Sons, located in Historic Clayton Borough, captures the charm and character of “hometown ” living for today ’s active adult. This new collection of 171 gracious ranch-style homes is designed to maximize buyers’ living space and minimize their maintenance. An exclusive 20-year tax incentive saves buyers thousands of dollars, making these value-packed homes that much more affordable.

**Clayton**  
Gloucester County, NJ  
**Priced from:**  
The low \$179,900

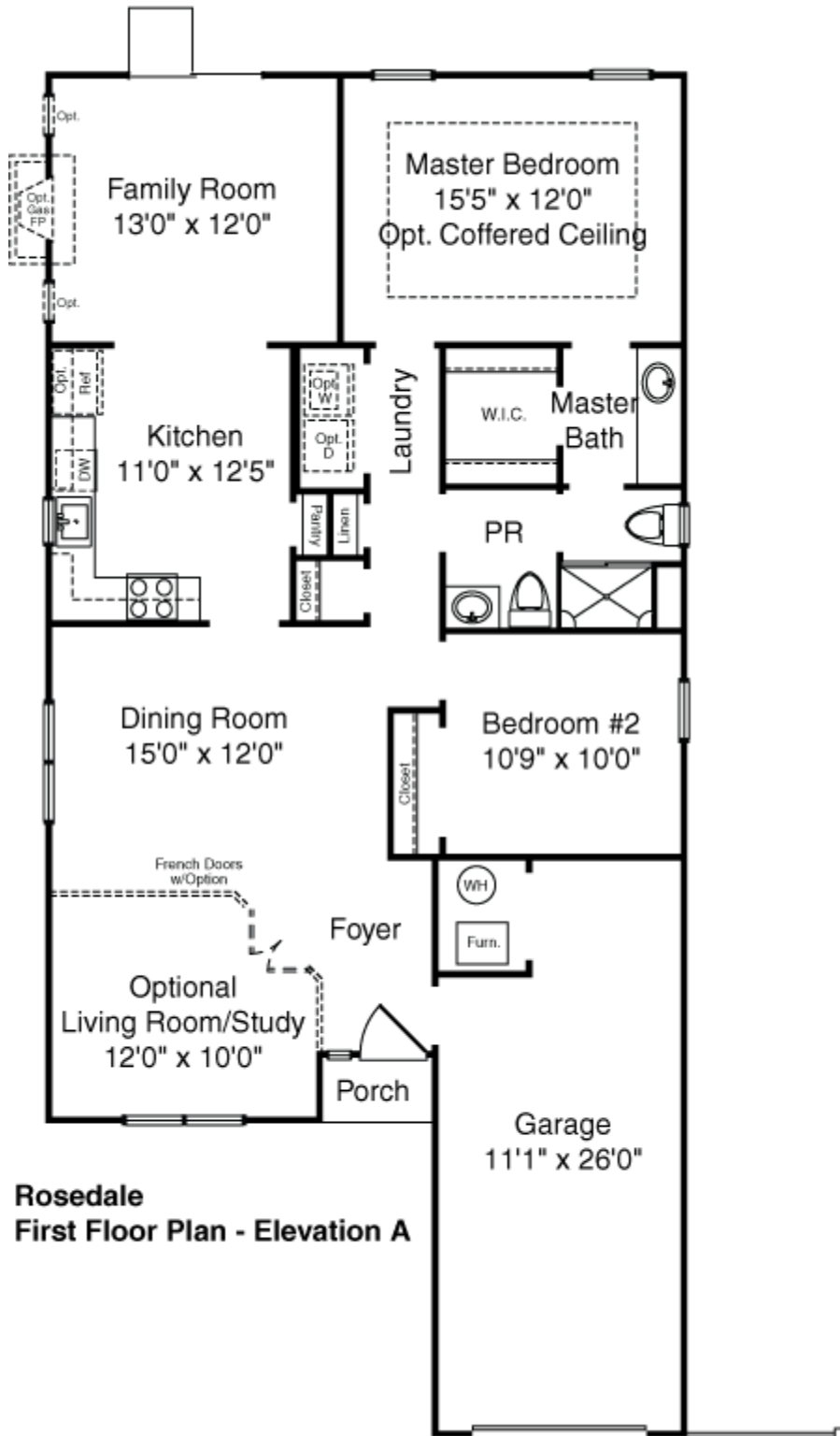
**Community Amenities:**

- Adjacent to future site of NEW Clayton| Senior Center
- Part of multi--generational community
- Lawn service
- Snow removal

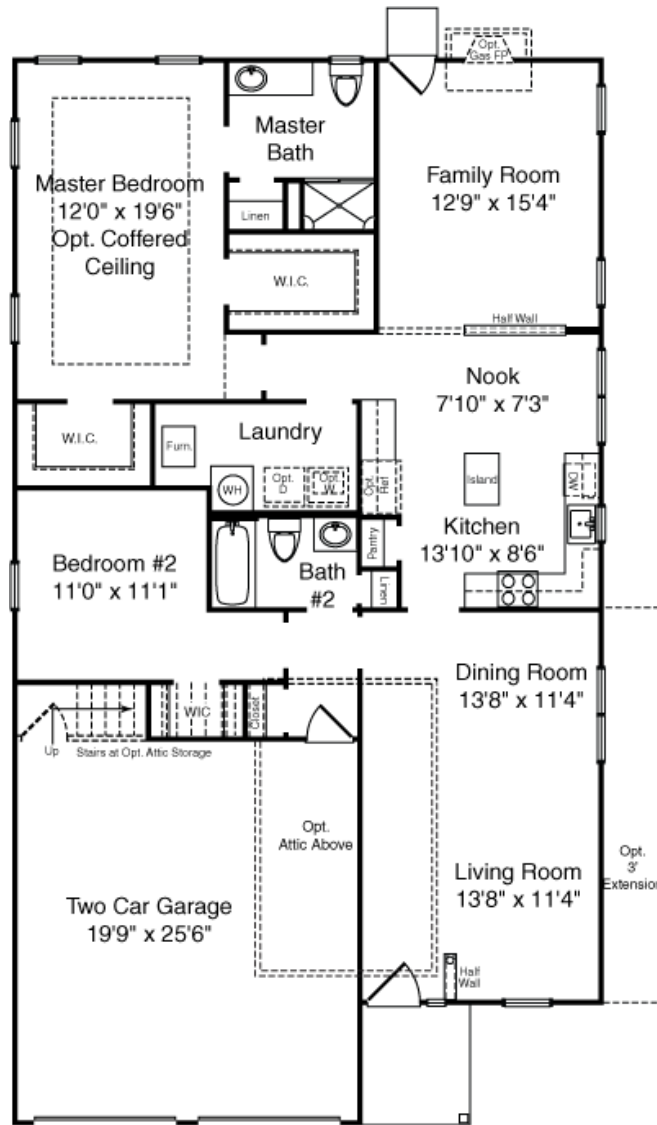
**Home Features:**

- 1,257 -- 2,351 sq. ft. of living
- Covered rear porches included, front porches available
- 2 – 3 spacious bedrooms and 1.5 - 3 baths
- Gracious master suites with walk-in closets and luxury Baths
- Versatile lofts (per plan)
- Large country kitchens
- Covered front and rear porches - front porches are per plan/elevation

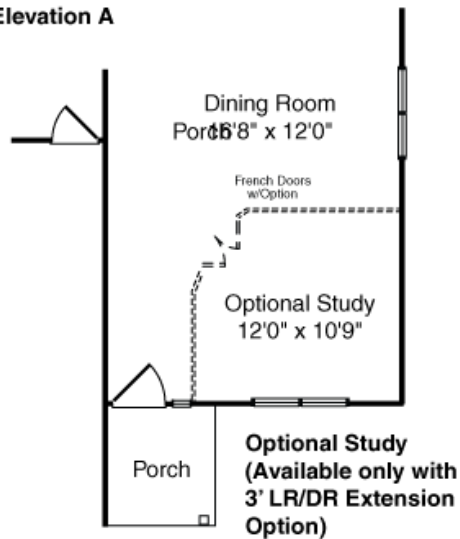




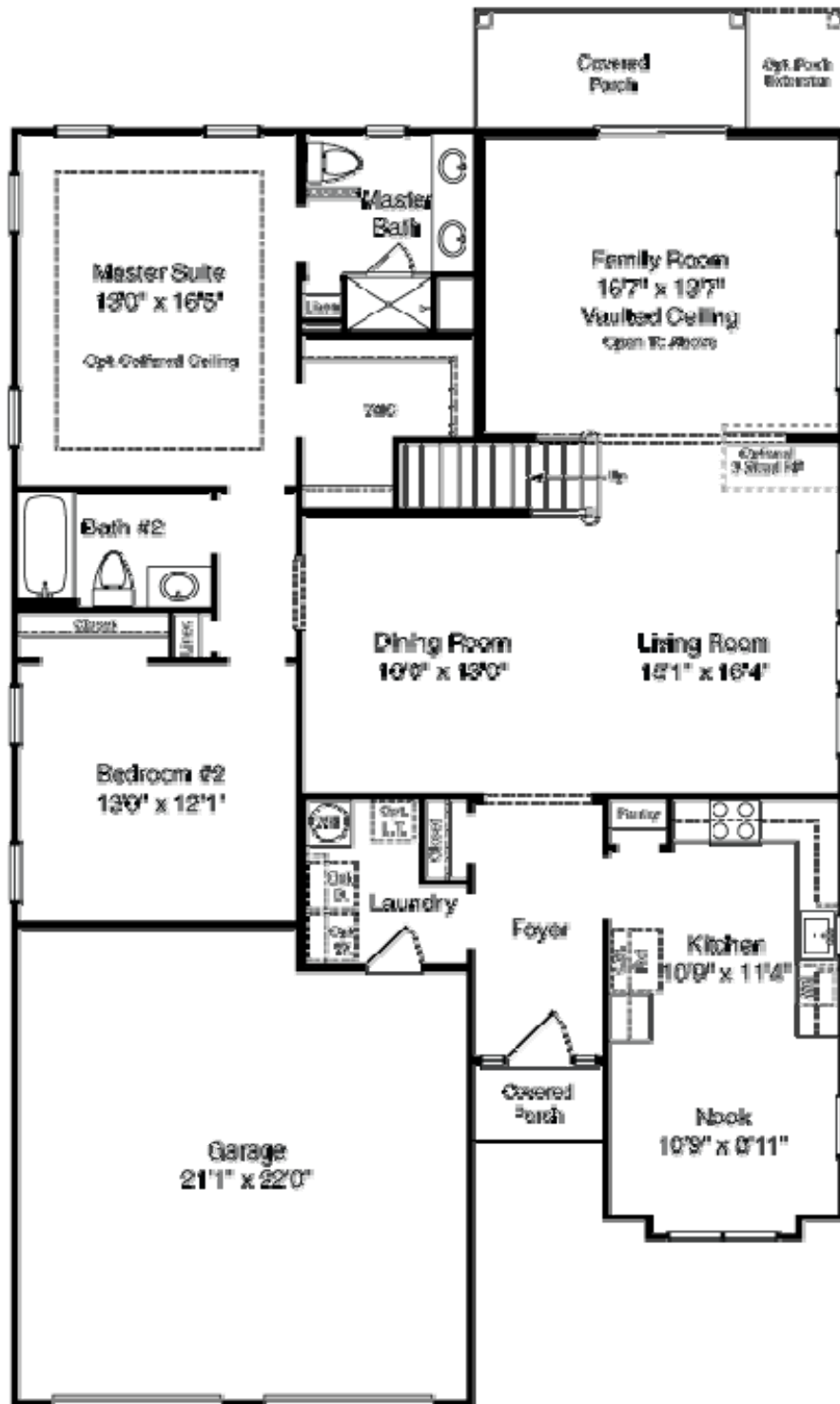
**Rosedale  
First Floor Plan - Elevation A**



**Fairmount  
First Floor Plan - Elevation A**

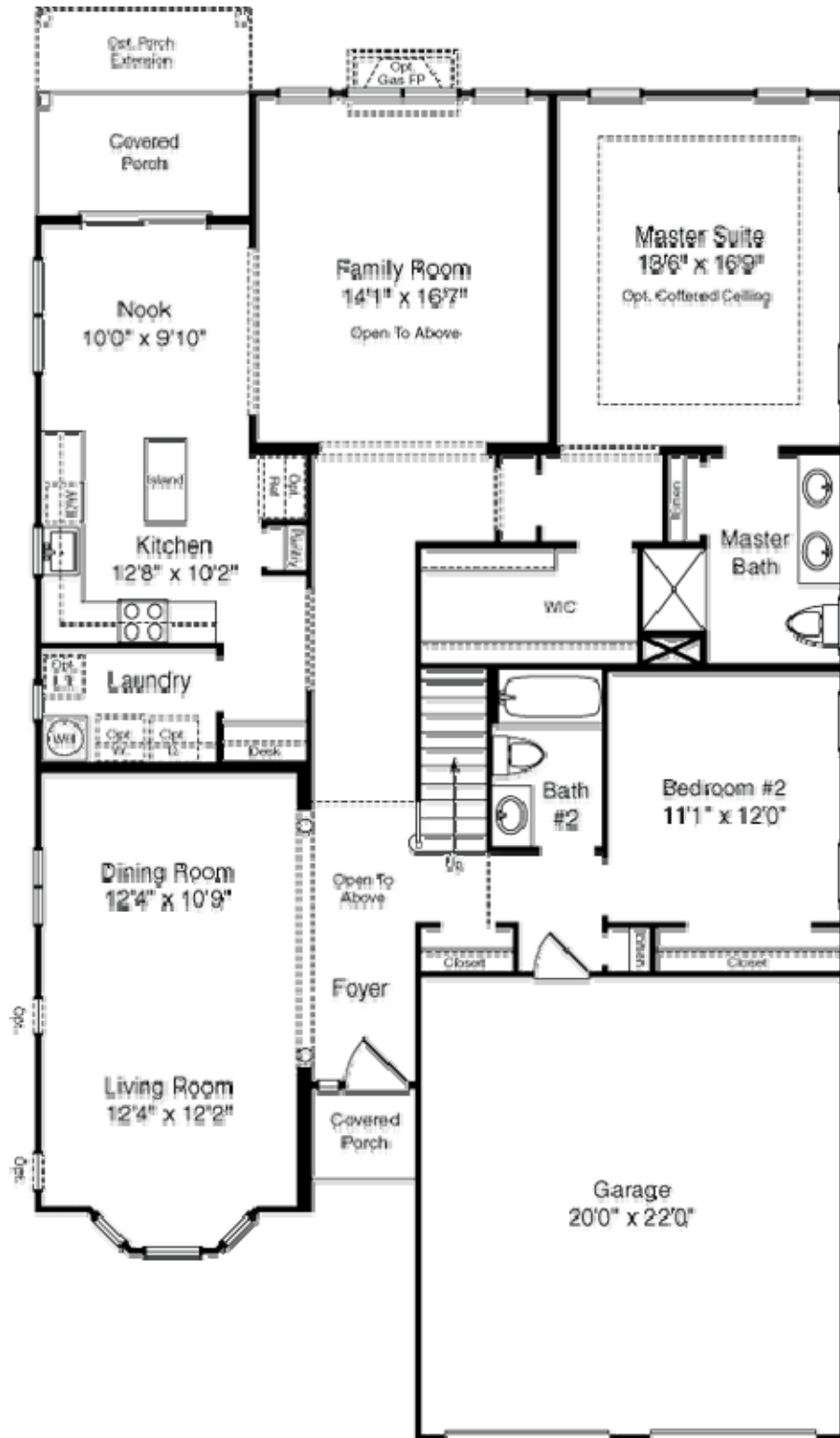




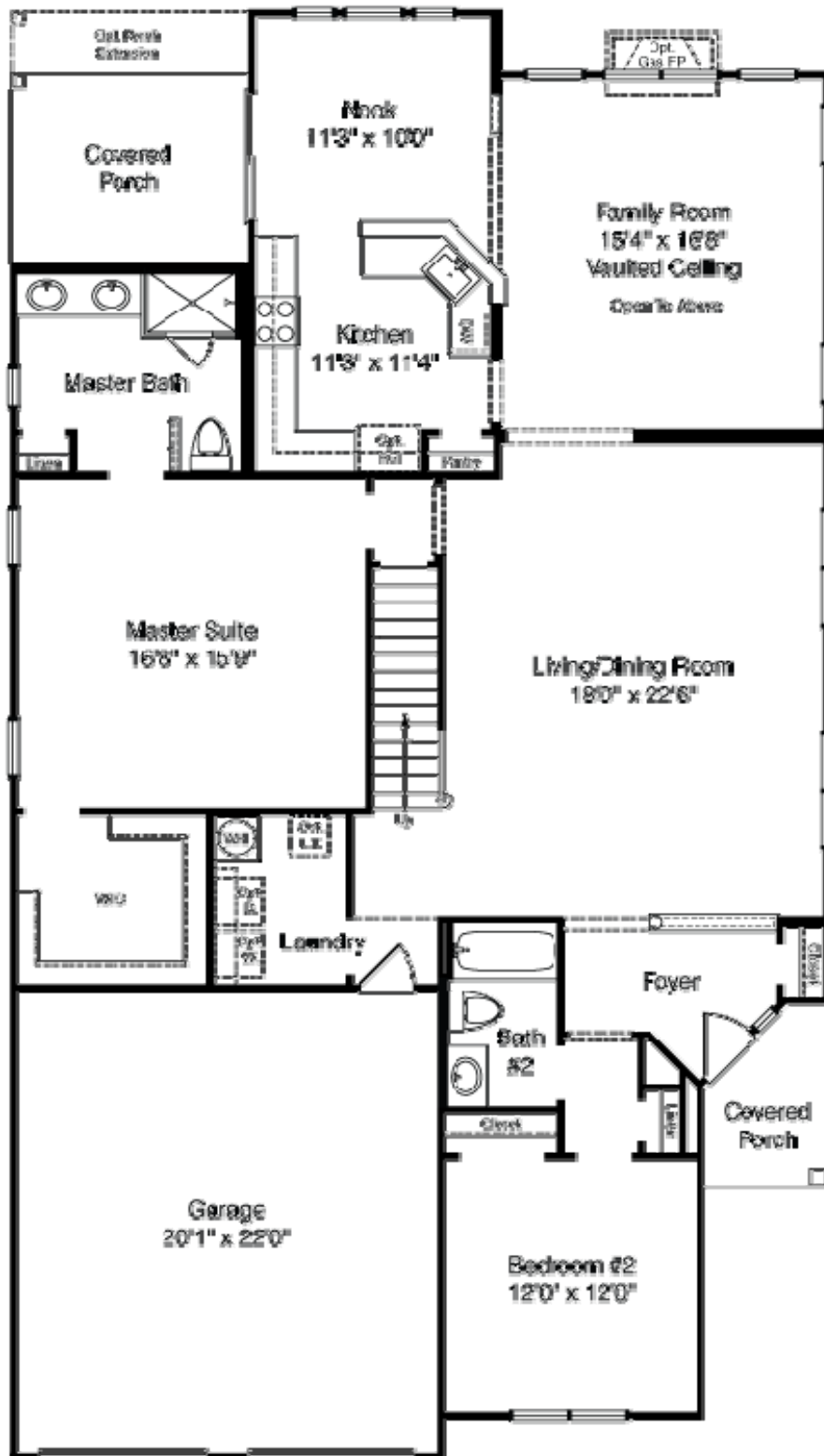


Oxford





**Barrington**



**Covington**