



LEGACY at READINGTON

Whitehouse Station,
Hunterdon County, NJ

[Return to Community Directory](#)

[Request More Info](#) [View Floor plans](#) [Create Printable Brochure](#)



Overview:

Country Classics Legacy at Readington boasts two elegant Victorian-style buildings situated on a spacious 17 acres bordered by woods. Country Classics offers seven stunning condominium floor plans designed for active adults. The neighborhood is conveniently located to routes 22, 31, 523, 202 and I-78 and I-287 giving home owners quick access to New York City, Philadelphia, as well as Hunterdon County's recreational destinations and first-rate shopping and dining.

Whitehouse Station, Hunterdon County, NJ

Priced from:
\$270,000's

Community Amenities:

- Landscaped courtyard with gazebo
- Tranquil walking trails with park benches
- Library
- Club//Card room
- Community room
- Fitness Room
- Secure building entry system
- Private, gated community

Home Features:

- Bruce pre-finished hardwood flooring in foyer and kitchen
- Ceramic--tile flooring in bathrooms
- Nine-foot ceilings throughout
- 1-3 bedrooms, 1.5 - 3 bathrooms and up to 1,616 square feet
- 1--car garages
- 150--amp electrical service
- Elevators
- Public sewer, water and underground utilities
- Washer//dryer hookups
- 6-panel colonial interior doors

Information:
908-534-7675

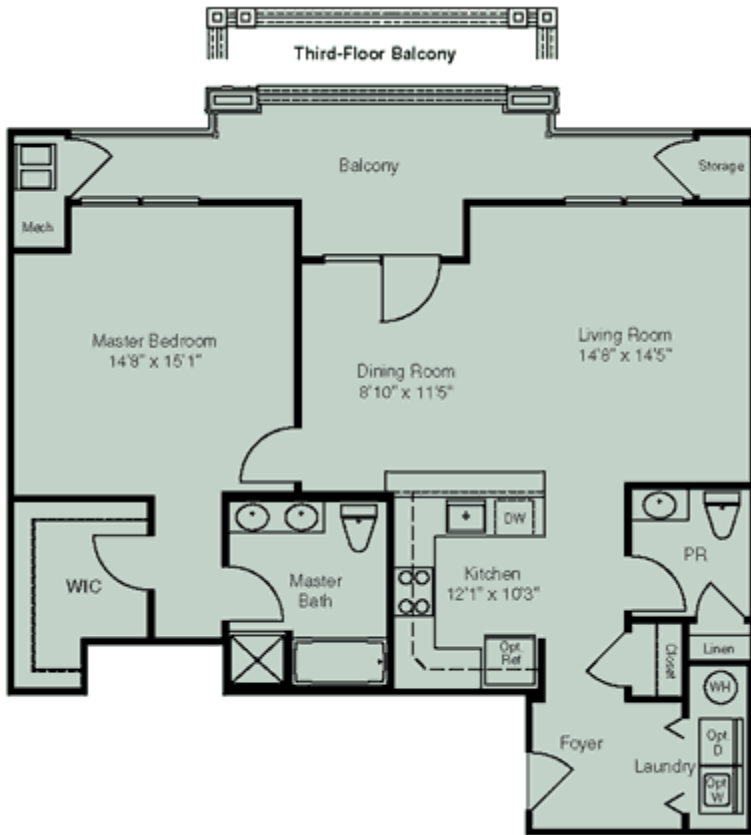
Sales Hours:
Thursday – Monday from
10 am to 5 pm
or by appointment.

Directions:
To visit from New Jersey,
take Route 78 East or
West to Exit 24 (Oldwick),
left onto Route 523 South.
Left onto Route 22 East
approximately 1 mile to
sales center on right. To

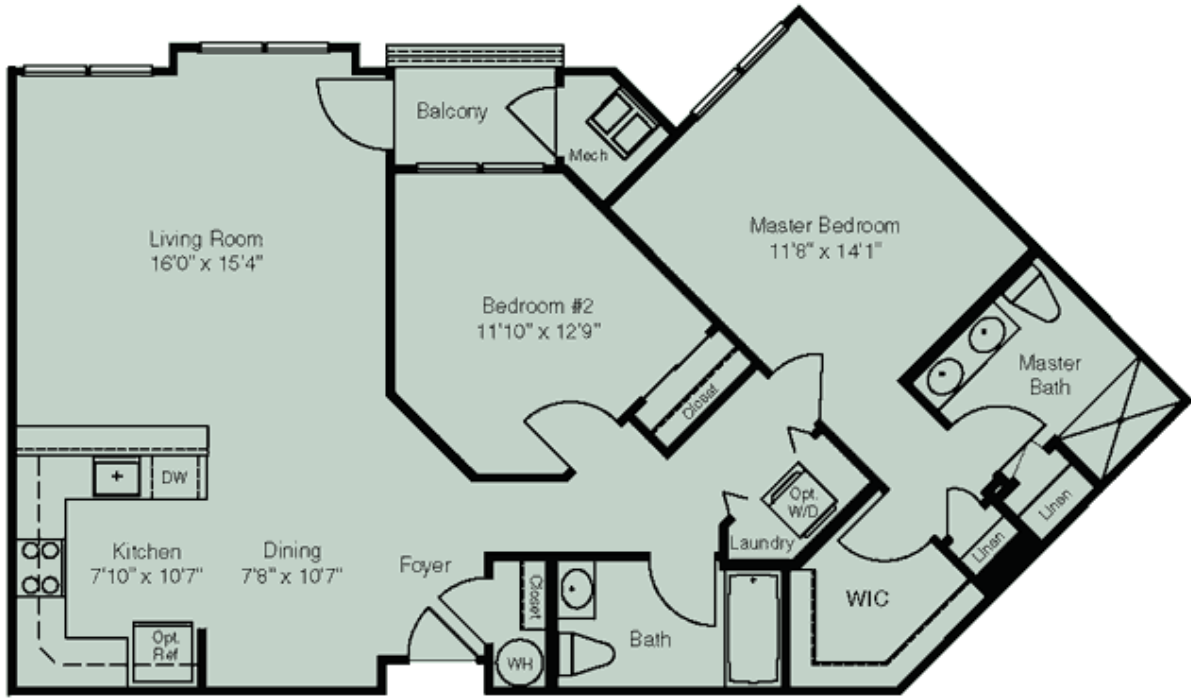
Downloaded from: www.activeadulthousing.com

Broad Street Publishing, LLC
53 Haddonfield Road, Suite 306, Cherry Hill NJ 08002

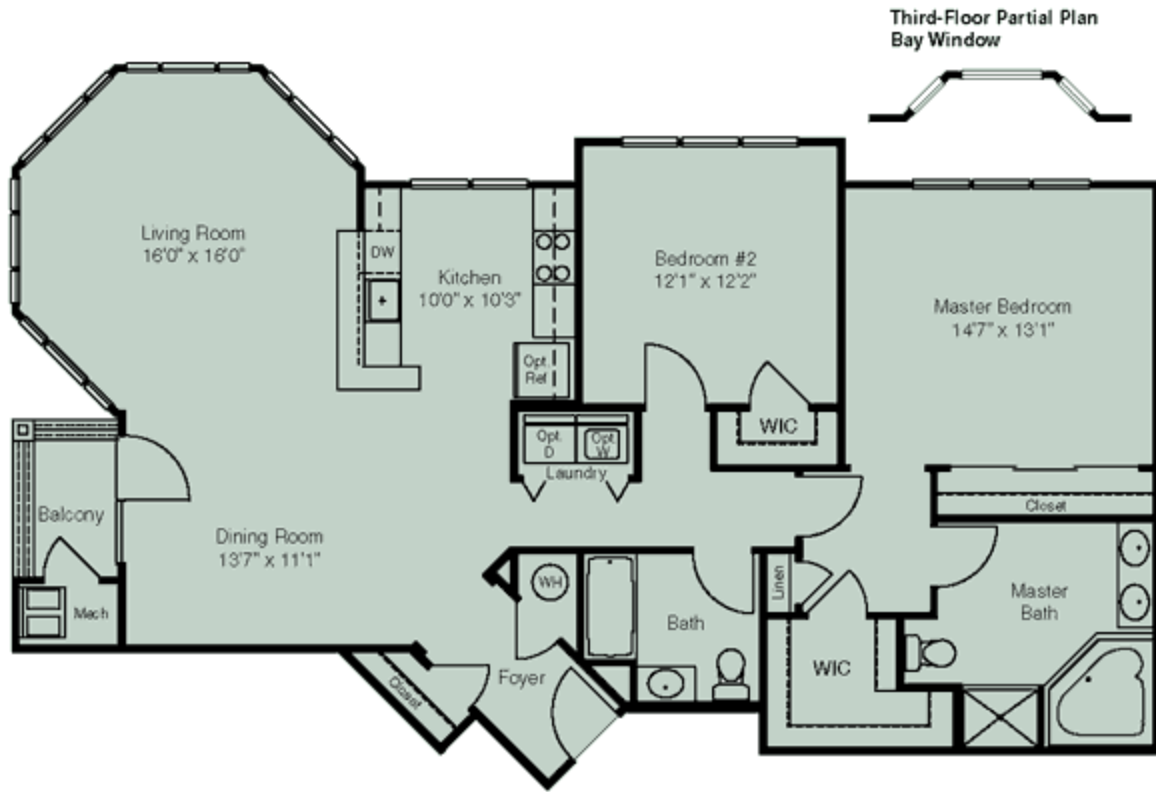
visit from Pennsylvania,
take Route 78 East to Exit
18 (Route 22 East)
approximately 1 mile past
intersection of Route
523/Route 22 (Kings
Shopping Plaza). Sales
center on right.



Alexandria



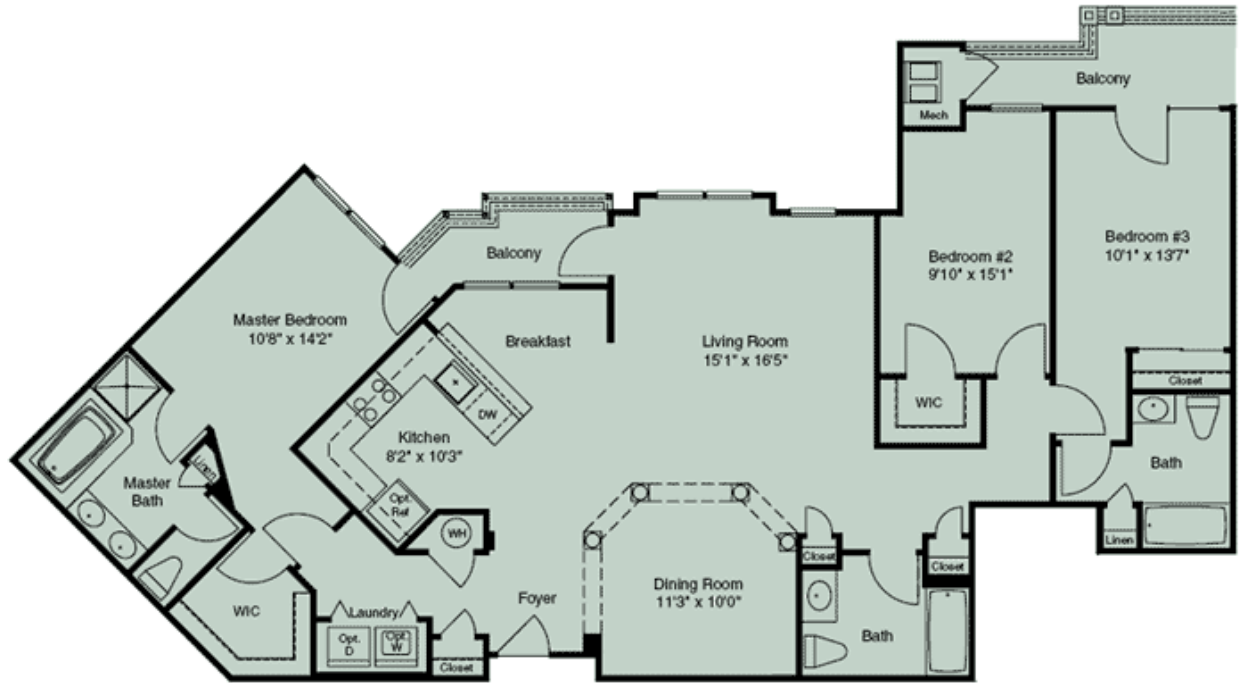
Bethlehem



Bloomsbury



Califon



Clinton



Hampton



Holland