



## Montebello

West Berlin Township  
Camden County, NJ

[Return to Community Directory](#)

[Request More Info](#)

[View Floor plans](#)

[Create Printable Brochure](#)



**Phone:**  
856.767.2530

**Sales Hours:**  
Daily 10 am -5 pm

**Directions:**  
**Coming from the North:** Take the N.J. Turnpike South to Exit 4 and follow Route 73 South for approx. 8 miles. Make a slight Left onto Cooper Road, entrance to MONTEBELLO is approximately 1 mile on Left.

**Coming from the South:** From Rte. 73 North make a Right onto Cooper Road, entrance to MONTEBELLO is approximately 1 mile on



**Overview:**  
Montebello offers year-round luxury for those 55+adults who are ready to be spoiled. The upscale community features 348 European-inspired luxury single family homes loaded with distinctive features yet to be seen in this area. The stunning 14,000 sq.ft.Club &Spa Center truly establishes Montebello as a resort-at-home community. The Club experience redefines luxury, offering a comprehensive Fitness Center, both indoor and outdoor pools, relaxing massage room, fun billiards and card rooms, courtyard lounge, putting green and more. Don 't miss your chance to be a part of South Jersey 's premier address!

**West Berlin Township**  
Camden County, NJ  
**Priced from:**  
FROM: \$329,900

### Community Amenities:

- Stunning 14,000 sq..ft. Club &Spa center
- Indoor and outdoor pools, massage room, courtyard lounge, fitness center and more!
- Lawn service and snow removal

### Home Features:

- 1,930 - 3,277 sq.ft.of living space
- 6 breathtaking models
- 1st floor master suites with walk--in closets and retreats
- Luxury Master Baths with dual vanities,ceramic tiled buttress showers with seats
- 10' first floor ceilings
- Designer kitchens with Granite Countertops
- Custom arches and

left. Coming from the Shore: From AC Expressway take Exit 33 (Winslow/Blue Anchor) to Route 73 North. Travel approx. 11 miles, make a Right onto Cooper Road, entrance to MONTEBELLO is approximately 1 mile on Left.



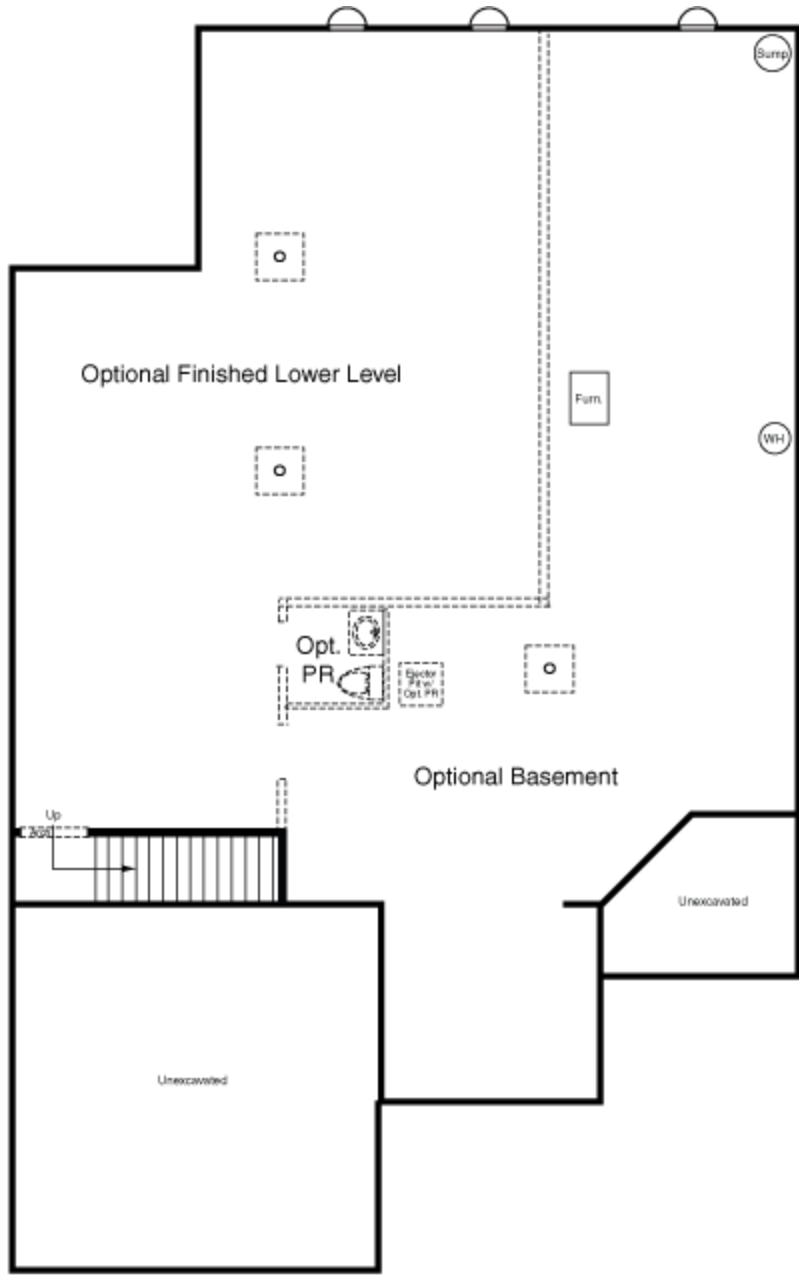
- finishes
- Hardwood foyers
  - Fireplaces

Download from [www.activeadulthoodhousing.com](http://www.activeadulthoodhousing.com)

Broad Street Publishing, LLC

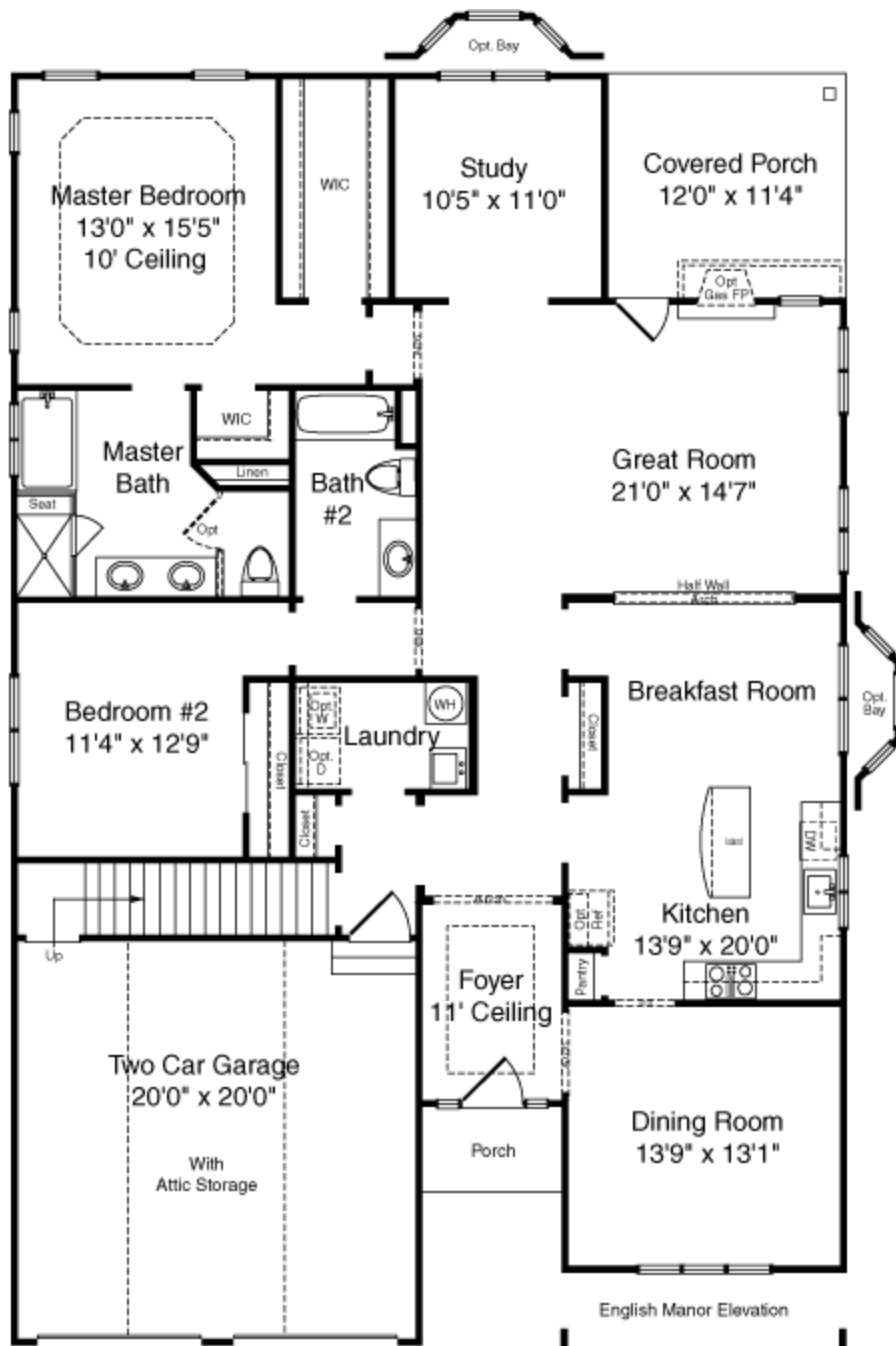
53 Haddonfield Road, Suite 306, Cherry Hill NJ 08002





**Cordova  
Finished Basement Plan**





**Seville**  
**First Floor Plan -**

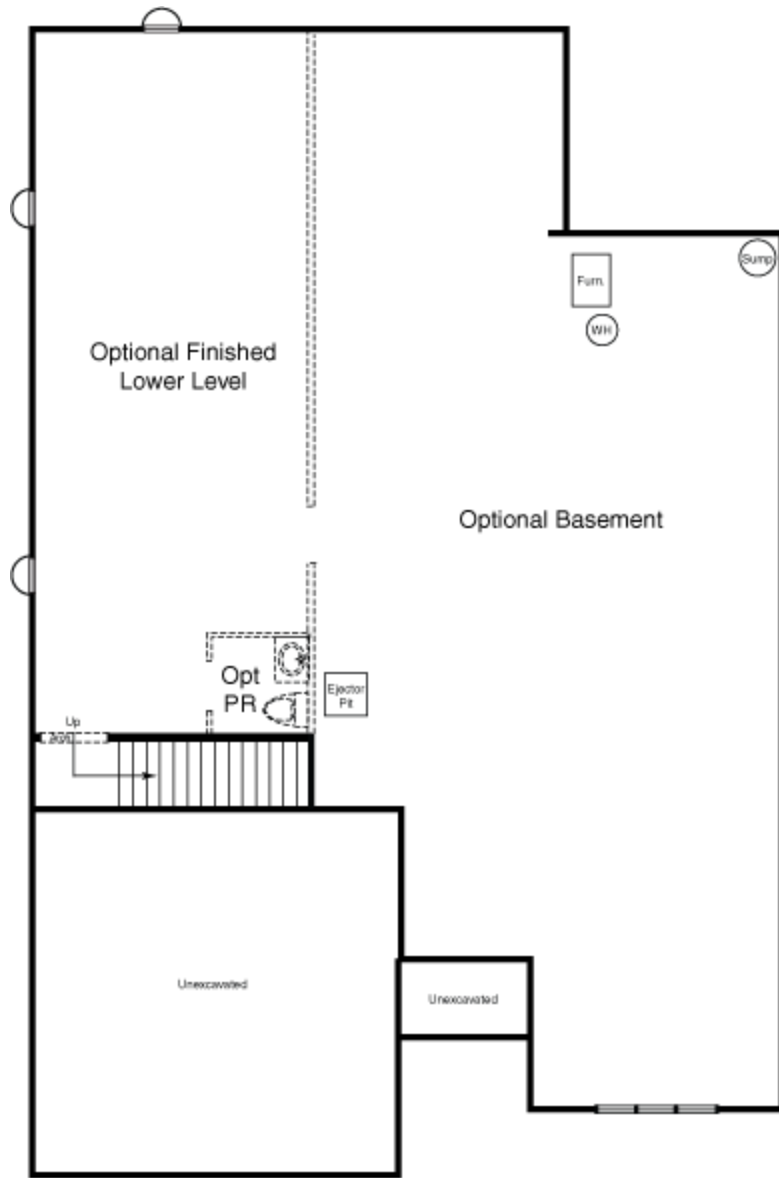
English Manor Elevation

Mediterranean Elevation

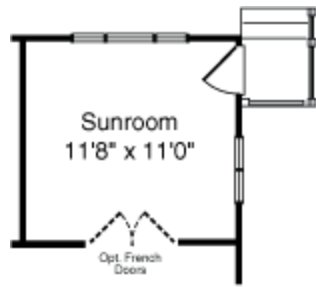
Country French Elevation



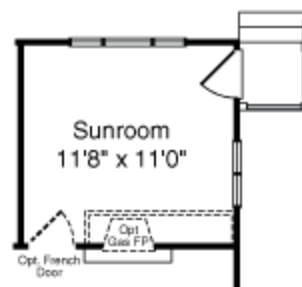
Optional Dining Room Elevation



**Seville**  
**Optional Basement Plan**



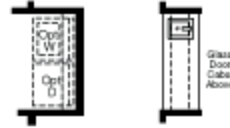
**Optional Sunroom  
w/out Fireplace**



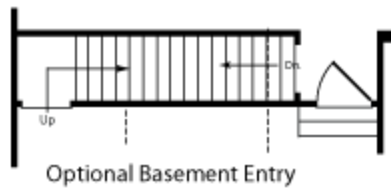
**Optional Sunroom  
w/optional fireplace & optional  
french door**



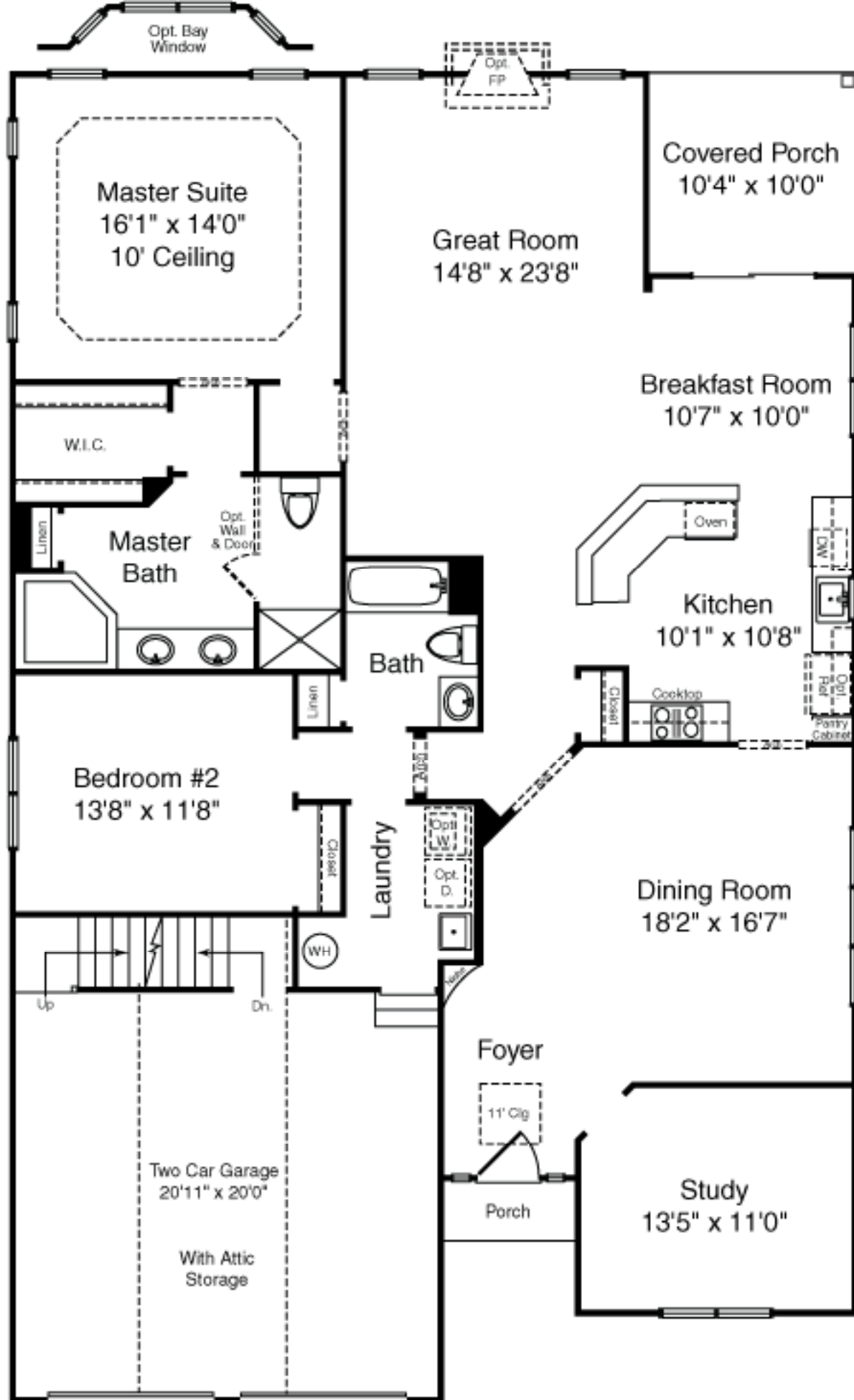
**Optional Internet Center**



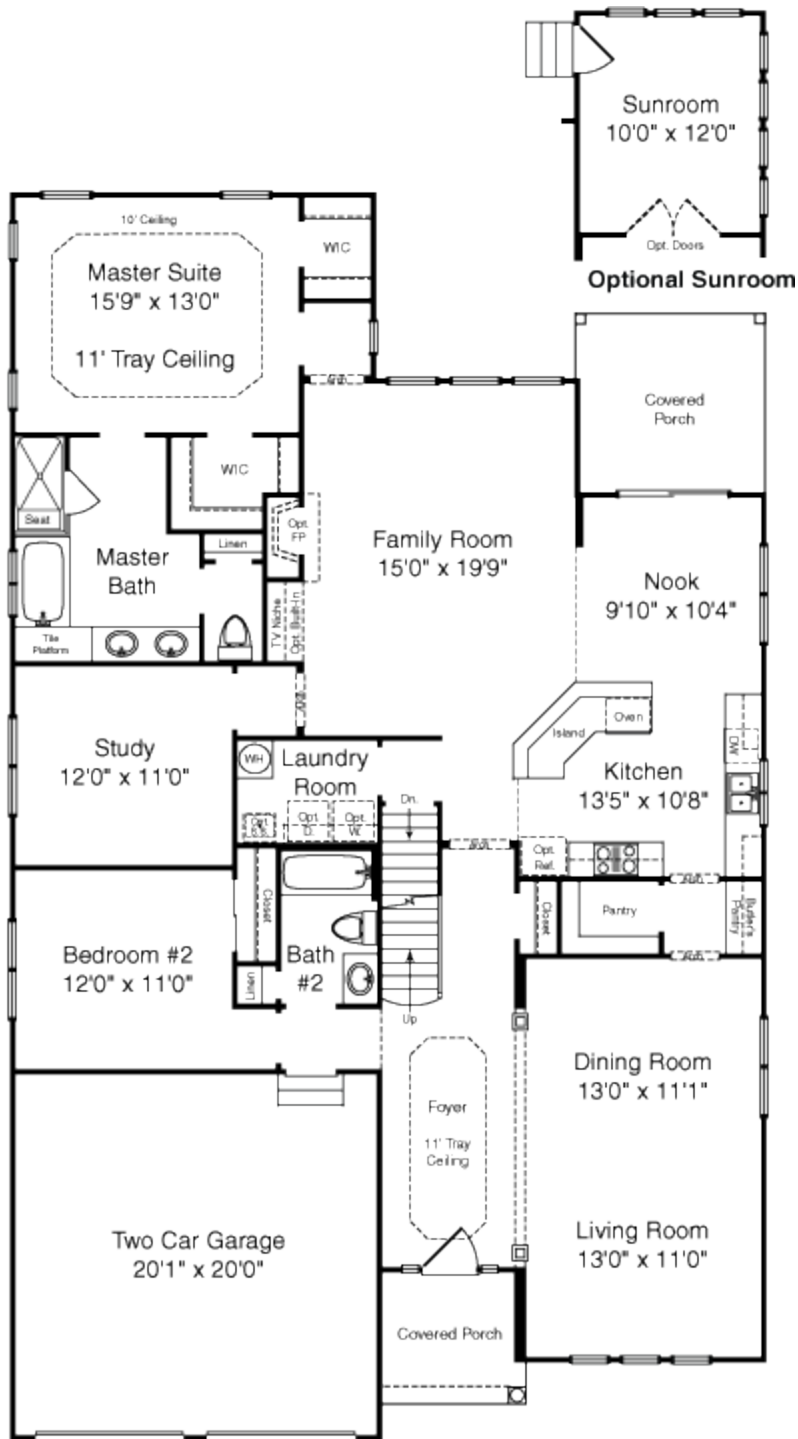
**Optional Wetbar**



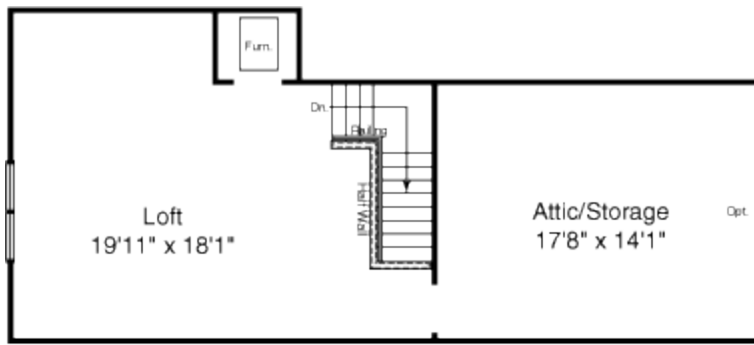
**Seville Options**



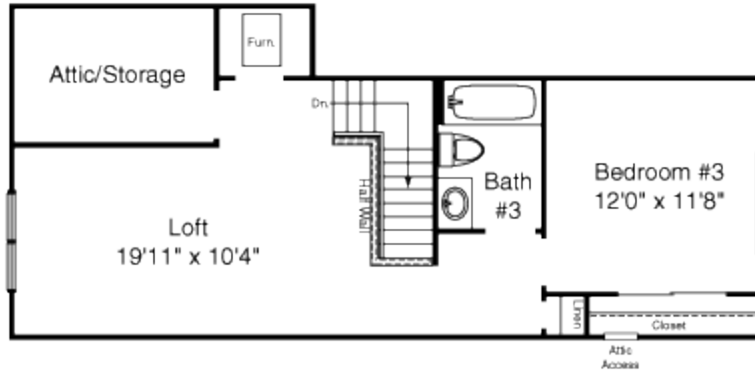
**Geneva  
First Floor Plan**



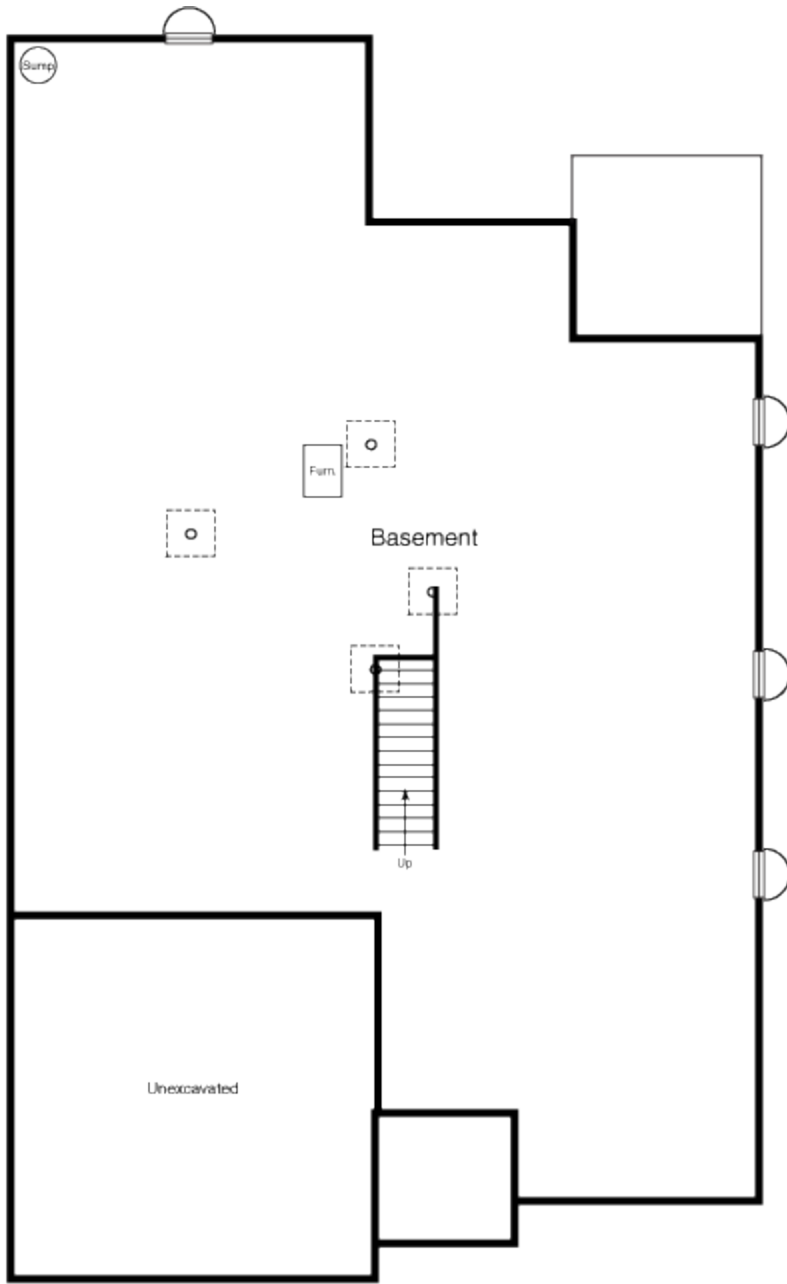
**Donatello – First Floor**



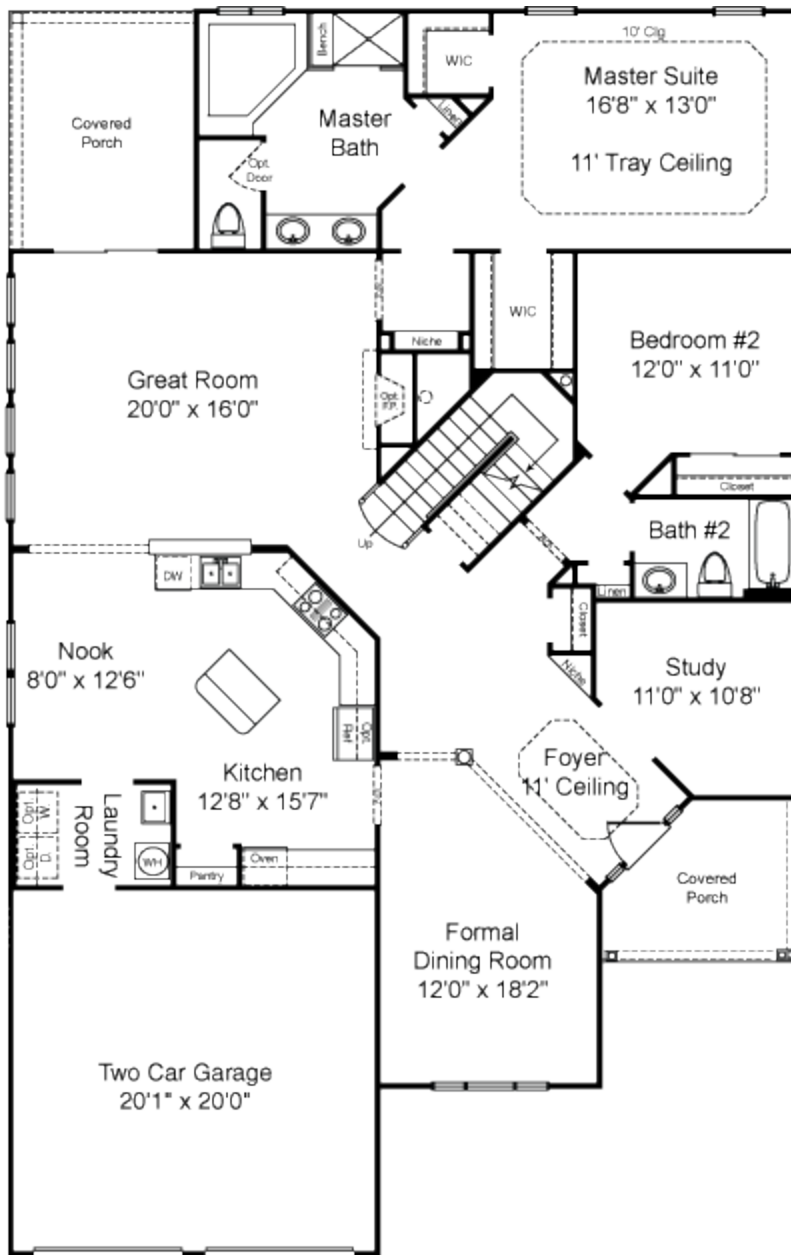
**Donatello**  
**Standard Second Floor Plan**



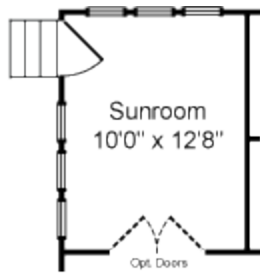
**Donatello**  
**Second Floor Plan**  
**Optional Loft/Optional Storage**



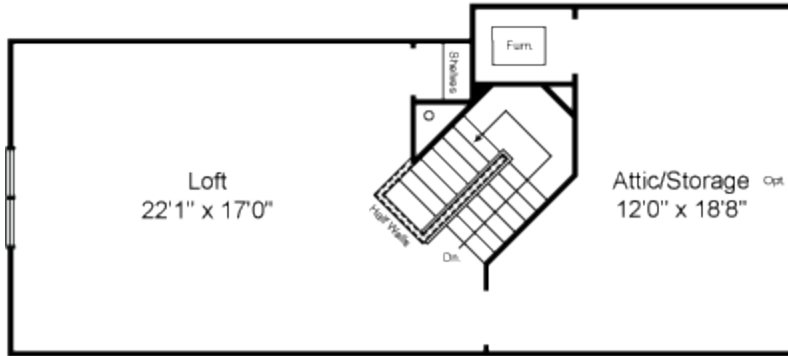
**Donatello – Lower Level**



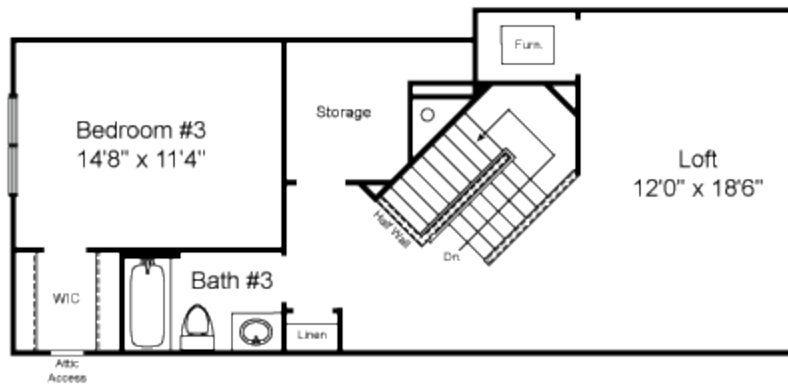
**Matisse – First Floor**



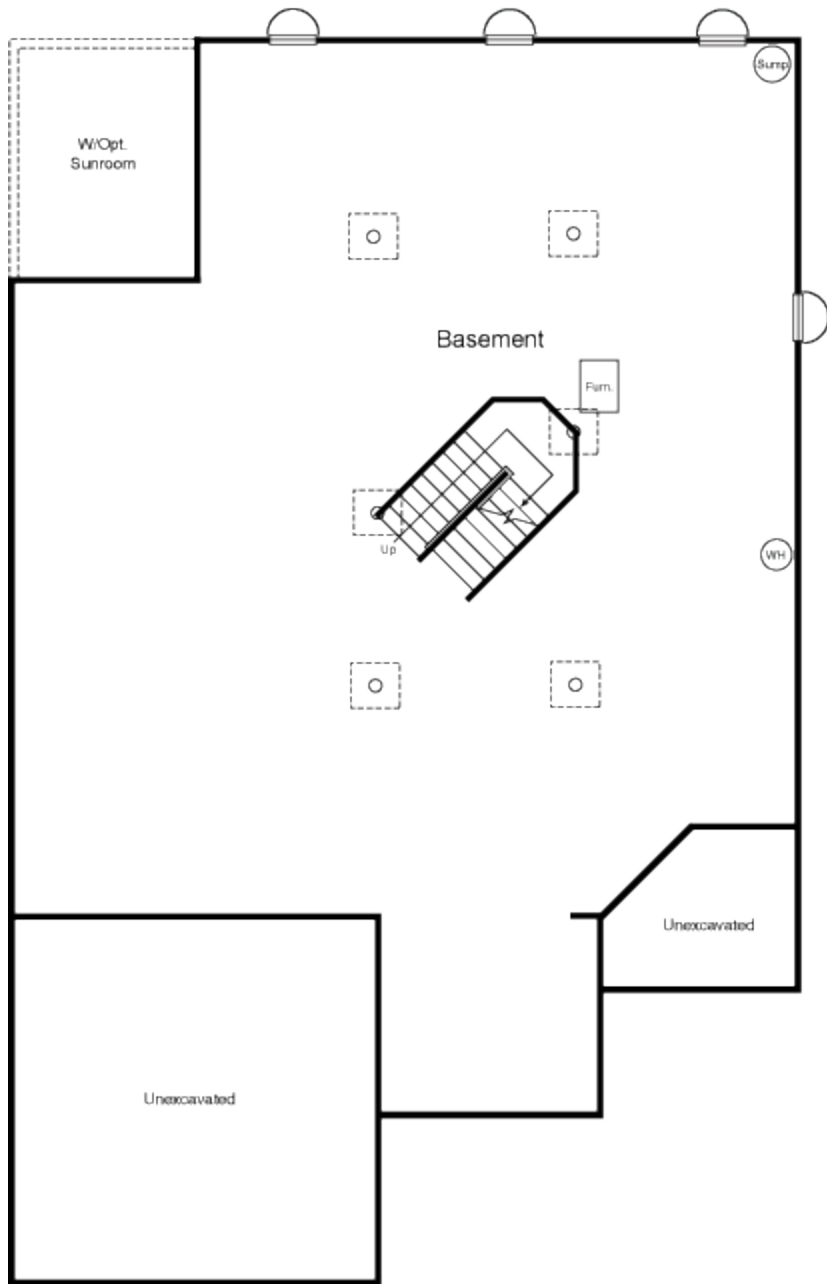
**Matisse**  
Optional Sunroom



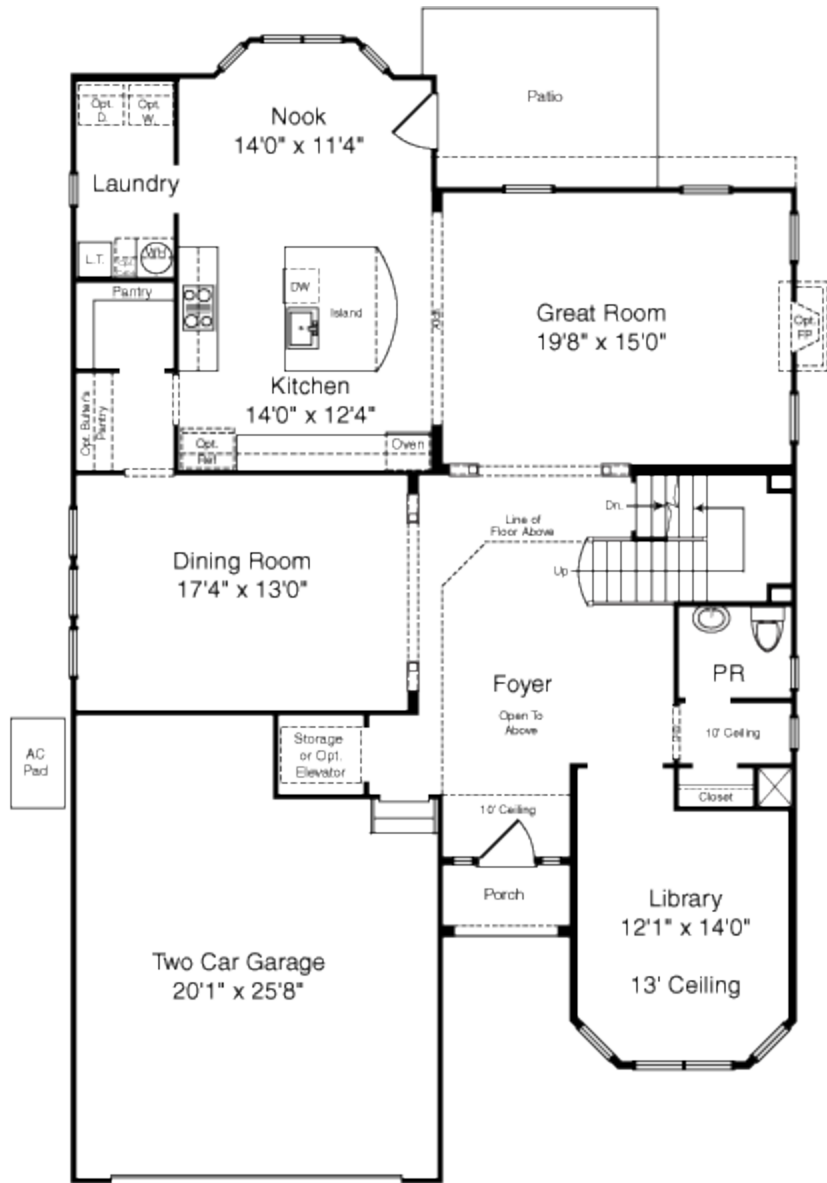
**Matisse**  
Standard Second Floor Plan



**Matisse**  
Optional Second Floor Plan -Loft/Bedroom #3/Bath #3/Storage



**Matisse – Lower Level**



**Toscana**