



**Siena  
Cinnaminson Township  
Burlington County, NJ**

[Return to Community Directory](#)

[Request More Info](#) [View Floor plans](#) [Create Printable Brochure](#)



**Information:**  
856-786-0252

**Sales Hours:**  
Daily: 10am - 5pm

**Directions:**  
**Coming from North:**  
Take NJ Turnpike South to Exit 7 toward McGuire Air Force Base to Rt. 295 South. Once on Rt. 295 South take Exit 43B toward Delran. Merge onto Creek Road and continue for about 3.5 miles. Make a Right onto S. Bridgeboro Street/ CR-613. Then merge onto Burlington Pike/US-130 South. Community will be 4.6 miles on your left.

**Coming from the South:**  
Take I-95 North towards Chester/Philadelphia to Exit 26/Rt. 90/ Betsy Ross Bridge.



**Overview:**  
Siena, located in Cinnaminson Township, combines innovative condominium flats with elegant living. In each of the twelve 3-story elevator serviced buildings, private arched entry ways and beautiful covered balconies tell you that you have arrived home. Designed with thought and care, each home boasts large storage spaces and plenty of natural light. Siena's active Clubhouse - including a Fitness Center, Billiards Room, Bocce Ball courts - has everything for every lifestyle. This destination is all about elegant living at an affordable price!

**Cinnaminson Township**  
Burlington County, NJ  
**Priced from:**  
Starting from the \$179,900

**Community Amenities:**

- Elevator Service
- Clubhouse featuring Bocce Ball courts, Billiards Room, Fitness Center, Ballroom and more
- 5 Year Tax Reduction
- Snow Removal

**Home Features:**

- Elegant lobbies and hallways
- Covered balcony
- Spacious designs with arched openings
- Quality 42" wood cabinetry in kitchen
- Private spacious storage rooms
- Master bathroom shower includes

Once you cross the Bridge merge onto US-130 North. Continue 2.5 miles and Community will be on your right.



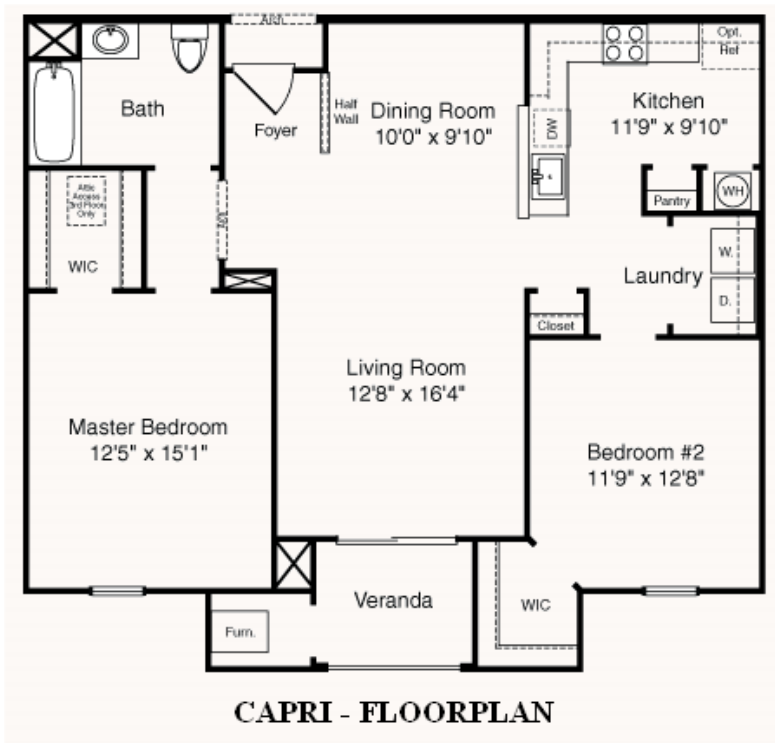
- convenient seat
- Private Parking space
- Full size washer & dryer
- Warranted Energy Savings Program

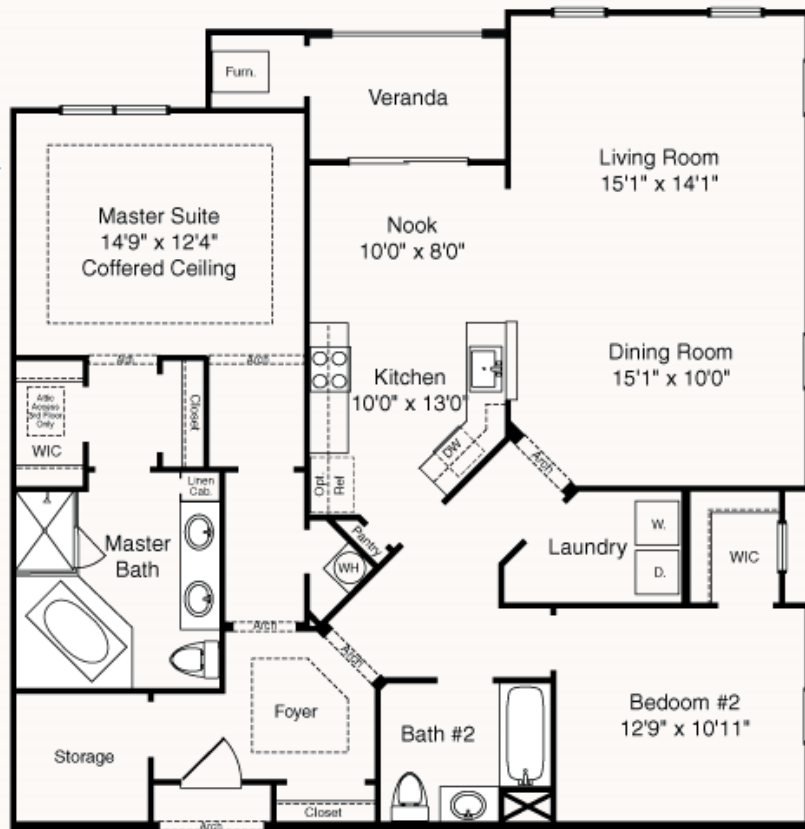
Download from [www.activeadulthousing.com](http://www.activeadulthousing.com)

Broad Street Publishing, LLC

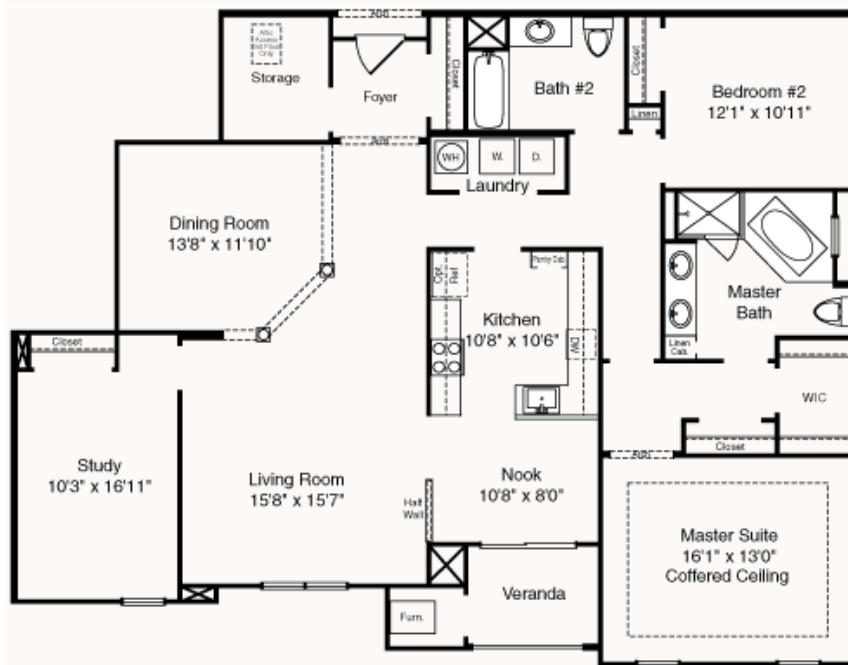
53 Haddonfield Road, Suite 306, Cherry Hill NJ 08002

# Siena Floor plans

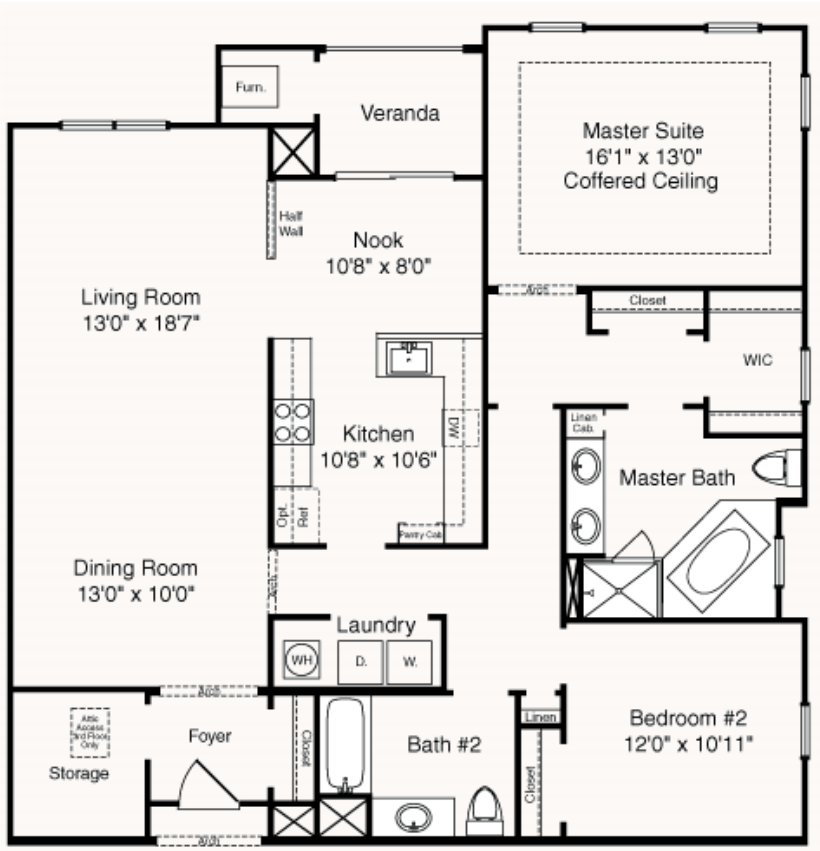




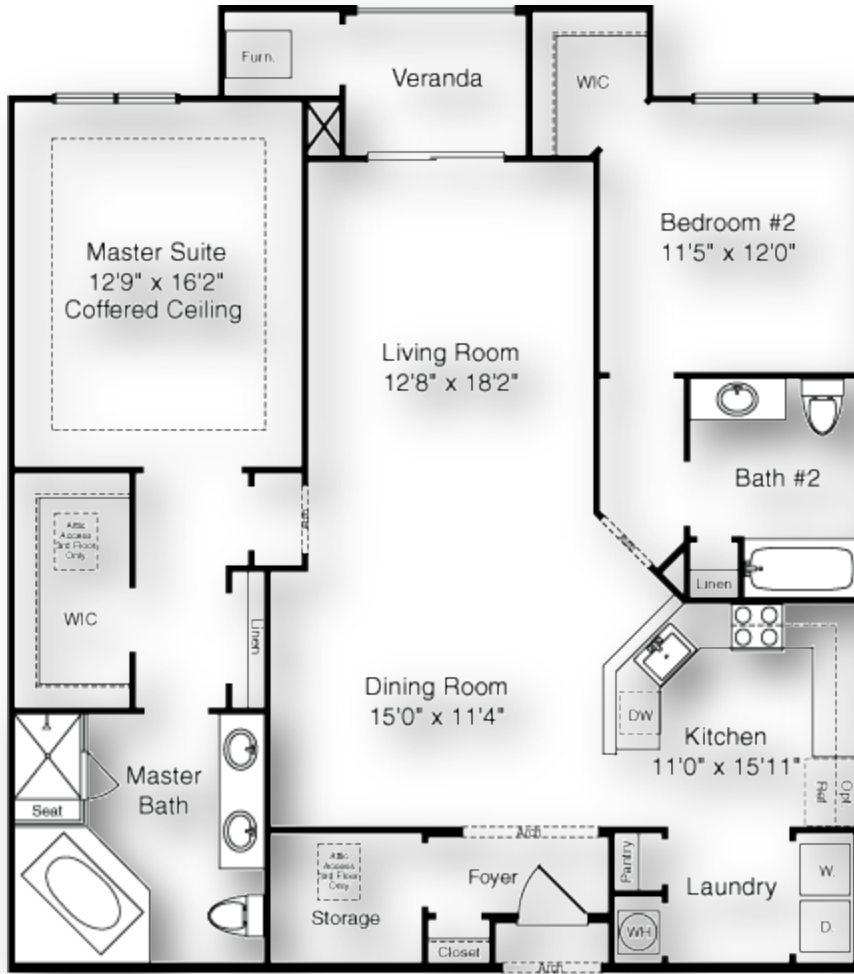
**PALAZZO - FLOORPLAN**



**MIRABELLA - FLOORPLAN**



**SORRENTO - FLOORPLAN**



# VERANO